

Anti-Swine IgG (H&L) Secondary Antibody
Goat Polyclonal, Unconjugated
Catalog # ASR1126**Specification**

Anti-Swine IgG (H&L) Secondary Antibody - Product Information

Description	Anti-SWINE IgG (H&L) (GOAT) Antibody
Host	Goat
Conjugate	Unconjugated
Target Species	Swine
Clonality	Polyclonal
Application	WB, E, IC
Application Note	ELISA 1:20,000-1:100,000;Western Blot 1:2,000-1:10,000;Immunochemistry 1:1,000-1:5,000
Physical State	Liquid (sterile filtered)
Host Isotype	IgG
Target Isotype	IgG (H&L)
Buffer	0.02 M Potassium Phosphate, 0.15 M Sodium Chloride, pH 7.2
Immunogen	Anti-Swine IgG (H&L) was produced by repeated immunization with swine whole IgG molecule in goat.
Preservative	0.01% (w/v) Sodium Azide

Anti-Swine IgG (H&L) Secondary Antibody - Additional Information**Shipping Condition**

Wet Ice

Purity

This product was prepared from monospecific antiserum by immunoaffinity chromatography using Swine IgG coupled to agarose beads. Assay by immunoelectrophoresis resulted in a single precipitin arc against anti-Goat Serum, Swine IgG and Swine Serum.

Storage Condition

Store vial at 4° C prior to opening. This product is stable for several weeks at 4° C as an undiluted liquid. Dilute only prior to immediate use. For extended storage aliquot contents and freeze at -20° C or below. Avoid cycles of freezing and thawing.

Precautions Note

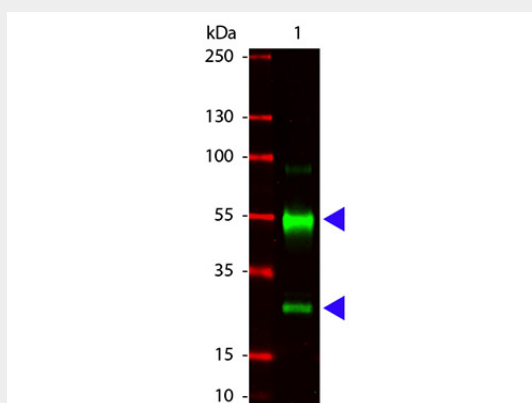
This product is for research use only and is not intended for therapeutic or diagnostic applications.

Anti-Swine IgG (H&L) Secondary Antibody - Protein Information**Anti-Swine IgG (H&L) Secondary Antibody - Protocols**

Provided below are standard protocols that you may find useful for product applications.

- [Western Blot](#)
- [Blocking Peptides](#)
- [Dot Blot](#)
- [Immunohistochemistry](#)
- [Immunofluorescence](#)
- [Immunoprecipitation](#)
- [Flow Cytometry](#)
- [Cell Culture](#)

Anti-Swine IgG (H&L) Secondary Antibody - Images



Western Blot of Goat anti-Swine IgG antibody. Lane 1: Swine IgG. Lane 2: none. Load: 100 ng per lane. Primary antibody: Swine Antibody at 1:1,000 o/n at 4°C . Secondary antibody: DyLight™ 649 goat secondary antibody at 1:20,000 for 30 min at RT. Block: MB-070 for 30 min at RT. Predicted/Observed size: 55 kDa, 28 kDa for Swine IgG. Other band(s): none.

Anti-Swine IgG (H&L) Secondary Antibody - Background

Anti-Swine IgG secondary antibody generated in goat detects specifically swine IgG. This secondary antibody anti-Swine is ideal for investigators who routinely perform titration assays, western-blot, immunoprecipitation and more generally immunoassays.